

GAS LATAM | HUB

Innovation and Solutions in Biomedical Engineering and Metrology

Three specialized **projects**,
one shared philosophy of **quality**.

medical π
BIOMEDICAL METROLOGY

**MENTR**
LABS
DEVELOPING BIOMEDICAL TALENT

GAS LATAM 
BIOMEDICAL ENGINEERING

International Organization for Standardization
ISO
13485 : 2016

CERTIFIED
COMPANY

Technology **saves lives**, our mission is to make sure it does so with **precision and trust**.

In a world where medical technology advances rapidly yet faces major operational challenges, there's a growing need for more than just a technical provider. What's required is a business model built on reliability, certification, and a human touch one that delivers solutions and fosters lasting trust.

GAS LATAM HUB was created as that answer. Not as another brand, but as the meeting point between engineering excellence, international standards, and a global vision.



HUMAN INTENTION

Traditional healthcare models and even medical technology itself have drifted away from their original purpose: improving quality of life and patient care. Today, change is needed. We must move toward collaborative and disruptive models where technology, healthcare professionals, biomedical engineers, and health institutions work together on prevention and quality-driven processes.

That's why we actively support and promote this **Human to Human (H2H)** initiative.

Quality doesn't happen by chance it's built through operational capability.



OUR OPERATIONAL BACKBONE IS DESIGNED TO RESPOND WITH **EFFECTIVENESS, SPEED, AND TRACEABILITY.**

- Calibration and verification laboratories
- High-precision metrological equipment
- Technical and logistics support center
- Digital platforms for full documentation traceability
- Standardized and certified processes for quality compliance



THE MEANING BEHIND WHAT WE DO

PURPOSE

We collaborate to ensure that medical technology fulfills its purpose: saving lives.

MISSION

We are a multidisciplinary team committed to ensuring that medical technology is developed, implemented, and used with precision, quality, and purpose to save lives.

VISION

To ensure, through biomedical engineering, that every medical technology performs safely, traceably, and with quality from its creation to its replacement.

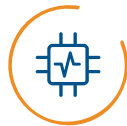


No transformative change happens alone.

Our impact grows through alliances with those who share our vision. We continuously collaborate with key players in the biomedical ecosystem to build competencies, share knowledge, and deliver real solutions across the region.



MANUFACTURERS OF BIOMEDICAL METROLOGY EQUIPMENT (OEMs)



HEALTHCARE TECHNOLOGY, QUALITY, AND SERVICE COMPANIES (OEMs)



PUBLIC AND PRIVATE HOSPITALS



REGULATORY AND CERTIFICATION BODIES



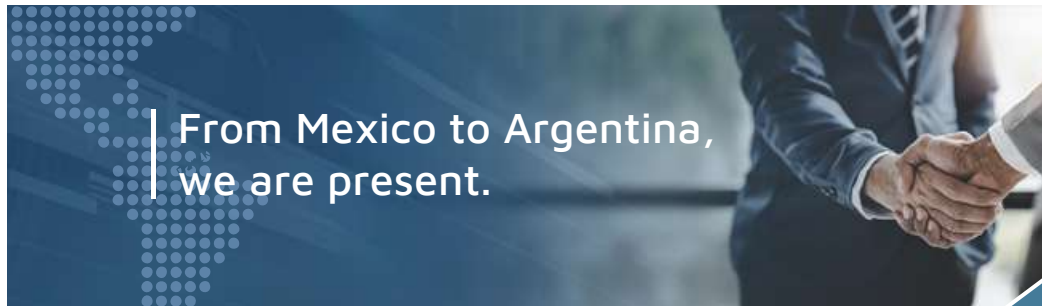
UNIVERSITIES AND PROFESSIONAL TRAINING CENTERS



CLUSTERS AND INNOVATION CENTERS



Thirty years of technical execution and strategic collaborations support our trajectory.



From Mexico to Argentina, we are present.

Our operational reach spans all of Latin America. Through our own teams and strategic partnerships, we deliver specialized solutions, remote support, and on-site services all under unified quality standards in each country.

Excellence is proven through quality.



At GAS LATAM HUB, we've built an integrated, certified, and audited model that we live by, improve upon, and use as a foundation for constant growth. Every accreditation and strategic partnership we've earned reflects years of rigorous work, commitment to excellence, and forward-thinking vision.

• Quality management system



ISO 13485:2016 – QUALITY MANAGEMENT SYSTEM FOR MEDICAL DEVICES.

Certified training by international OEMs and leading manufacturers of analyzers, simulators, and medical equipment.

• CERTIFICATIONS

Quality is not a promise it's a practice backed by certifications. This ensures that every service process meets the applicable technical and normative requirements of the healthcare sector.



• OEMs in Medical Equipment



• OEMs in Biomedical Metrology

• AFFILIATIONS AND PROFESSIONAL NETWORKS

We are active members of leading biomedical engineering organizations, reflecting our commitment to continuous learning, professional ethics, and the exchange of best practices.



Mexican Society of Biomedical Engineering



American College of Clinical Engineering



Biomedical Engineering Cluster of Jalisco

Every calibration we perform is a commitment to life.



● CERTIFIED SERVICE FOR ANESTHESIA VAPORIZERS



Our calibration and maintenance process has become a recognized standard across the healthcare and medical device industries accepted throughout Latin America and worldwide.

Each procedure follows a specific service protocol developed by our team, using advanced technology and aligned with international quality compliance standards ensuring the highest reliability and safety.

WE SERVICE ALL MAJOR BRANDS

Datex-Ohmeda

mindray



Dräger

Penlon ◆

SPACELABS HEALTHCARE

Our Process



Full Inspection

Thorough examination of every component to ensure proper operation.



Disassembly and Cleaning

Complete disassembly of the vaporizer for detailed maintenance and cleaning.



Performance Testing

Evaluation of functionality according to the manufacturer's standards.



Specialized Calibration

Precision adjustments using advanced laser calibration technology.



Comprehensive Documentation

Detailed reports with calibration results and conditions.



Delivery

Equipment returned via specialized medical logistics services.

Protecting lives through quality compliance



BIOMEDICAL METROLOGY ANALYZERS AND SIMULATORS



medical it
BIOMEDICAL METROLOGY

With extensive experience across Latin America, MEDICAL IT specializes in Quality Compliance for healthcare technologies through the use and application of Biomedical Metrology equipment and expertise.



Equipment Repair Calibration Quality

Our Service Center operates with certified instruments and traceability to both international and national reference laboratories.



Infusion Pump Analyzers



Defibrillator Analyzers



Electrical Safety Analyzers



Ventilator Analyzers and Simulators



Patient Monitoring Simulators



ECG Analyzers



Neonatal / Maternal-Fetal Simulators and Analyzers



Endoscopy System Analyzers

LATAM MASTER DISTRIBUTOR

IMT.Analytics



Training builds confidence, clarity,
and a stronger role in **patient safety**.

● CONTINUOUS EDUCATION FOR BIOMEDICAL PROFESSIONALS



Working in biomedical engineering requires more than technical knowledge it calls for sound judgment, practical experience, and a deep understanding of healthcare standards.

Our programs are designed to develop well-rounded professionals who combine precision, purpose, and critical thinking. Each course blends real-world practice, expert insight, and measurable outcomes to help you grow as a confident and competent biomedical professional.



Clear technical introductions

that set the foundation for meaningful learning.



Hands-on practice with real equipment

in a controlled, risk-free environment.



Comprehensive theory-practice assessments

that strengthen both skills and confidence.



Live sessions with biomedical experts

to share experiences, insights, and real-world case studies.

ONE PROGRAM, THREE DIMENSIONS

Technical Quality Compliance

Master the processes and criteria that ensure traceability, reliability, and clinical safety in every procedure.

Applied Biomedical Metrology

Gain hands-on experience using, testing, and calibrating medical devices with professional analyzers and simulators.

Healthcare Standards and Regulations

Understand and apply national and international frameworks (including ISO standards) to meet the highest industry expectations.

THREE STRATEGIC DIMENSIONS

GAS LATAM | HUB

Innovation and Solutions in Biomedical Engineering and Metrology

LATIN AMERICA HUB

Calle Sol #2816. Jardines del Bosque
Guadalajara, Jalisco. 44520
T: +52 (33) 3120-9800

@gaslatam.com

@medicalitech.com

@mntrlabs.com

■ www.gaslatamhub.com